

HAWK RURAL

3,000 LITRE FEEDER
ASSEMBLY INSTRUCTIONS

THANK YOU VERY MUCH FOR PURCHASING THE 3,000 LITRE HAWK RURAL FEEDER. BEFORE YOU START ASSEMBLY, PLEASE CHECK ATTACHED PARTS LIST AND MAKE SURE YOU HAVE ALL THE INCLUDED PARTS. CONTACT OUR AUTHORISED DEALER IMMEDIATELY IF YOU FIND ANYTHING MISSING.

ASSEMBLY INSTRUCTIONS



HAWK RURAL

3,000 LITRE FEEDER ASSEMBLY INSTRUCTIONS

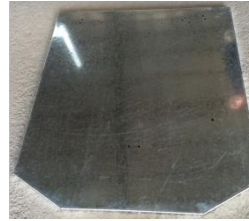
STEP 1:

Select item #1 (Frame Stand), item #2 (Left End wall), #3 (Right End wall), #29 (Left Post x 2 units) and Item #30 (Right Posts x 2 units)

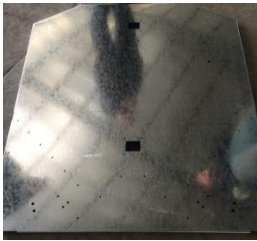
Item #1 (Frame Stand)



Item #2 (Left End Wall)



Item #3 (Right End Wall)



Item #29 (Left Post)



Item #30 (Right Post)



- (a) Connect the LEFT and RIGHT POST to each corner using Item #32 (M12*60 bolt), #33 (M12 Nuts), and #34 (M12 flat Washer). Do not fully tighten to allow movement at this moment!!!
- (b) Connect LEFT AND RIGHT END WALLS to the POSTS using Item #49 (M5*20 Tech screws), #32 (M12*60 bolt), #33 (M12 Nuts), and #34 (M12 flat Washer). Ensure that the edge and the POSTS are flush, and then tighten bolt and nuts to the FRAME STAND.



HAWK RURAL

3,000 LITRE FEEDER ASSEMBLY INSTRUCTIONS

STEP 2:

Select Item #27 (Main Support) and connect it to both END WALL using Item #35 (M8*20 Bolt), #37 (M8 Flat Washer), and #38 (M8 Nuts)

Item #27 (Main Support)



STEP 3:

Select Item #9 (BASE), #49 (M5*20 Tech Screw), and #51 (Protector Triangle)

Item #9 (Base)



Item #51 (Protector Triangle)



- (a) Place the BASE between both ends, line up pre-drilled holes and connect the BASE to END WALL and FRAME STAND using (M5*20 Tech Screw).



HAWK RURAL

3,000 LITRE FEEDER ASSEMBLY INSTRUCTIONS

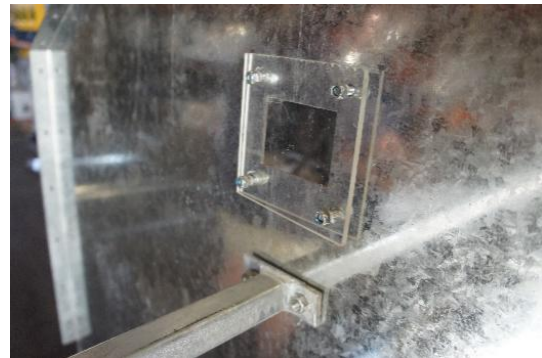
(b) Place the PROTECTOR TRIANGLE into the hole of POST on each corner.



STEP 4:

Select Item #21 (PVC board x 3 units), fit to the peep hole at both END WALL using Item #45 (M6*15 Bolt, #47 (M6 nuts), and #48 (M6 Flat Washer).

Item #21 (PVC board)



STEP 5:

Select item #31 (Strength Plate x 2 units) and #28 (Angle piece x 7 units) and #49 (M5*20 Tech Screw)

Item #28 (Angle piece)



Item #31 (Strength Plate)



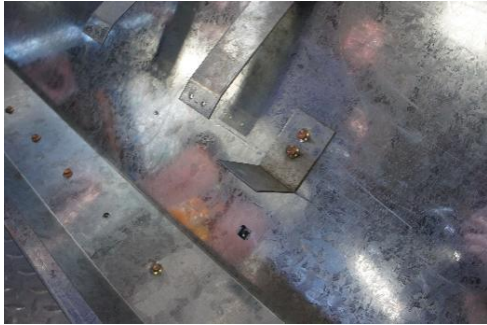
HAWK RURAL

3,000 LITRE FEEDER ASSEMBLY INSTRUCTIONS

(a) Attach 2 units of STRENGTH PLATE using the Tech Screw to pre-drilled holes on the BASE.

(b) Attach 7 units of ANGLE PIECE to the BASE using (M5*20 Tech Screw) to pre-drilled holes in the corner of the fold.

(a)



(b)



STEP 6:

Select item #15 (Left Adjuster Bracket x 2 units), #16 (Right Adjuster bracket x 2 units), #35 (M8*20 Bolt), #37 (M8 Flat Washer), #38 (M8 Nuts)

Item #15 (Left Adjuster Bracket)



Item #16 (Right Adjuster Bracket)



(a) Fit the ADJUSTED BRACKET using (M8*20 bolt, nuts and flat washer) on LEFT AND RIGHT END WALLS.

(b) Sealant between BASE and both END WALL then tighten.

(a)



(b)



HAWK RURAL

3,000 LITRE FEEDER ASSEMBLY INSTRUCTIONS

STEP 7:

Select item #11 (Bottom Board x 2 units) and #49 (M5*20 Tech Screw)

Item #11 (Bottom board)



(a)



(a) Slide the **BOTTOM BOARD** into position, line it up with the pre-drilled holes on the **END WALL** and loosely the tech screw to end.

(b) Attach 7 units of **ANGLE PIECE** that screwed into the **BASE** already to the **BOTTOM BOARDS**.

(c) Make sure that all holes have a screw fitted then tighten all screws.



(a)



(b)

(c)



HAWK RURAL

3,000 LITRE FEEDER ASSEMBLY INSTRUCTIONS

STEP 8:

Select item #24 (Long Support x 1 unit), #25 (Short SUPPORT x 3 units), #26 (SUPPORT PLATE x 8 units) and item #49 (M5*20 Tech screw)

Item #24 (Long Support)



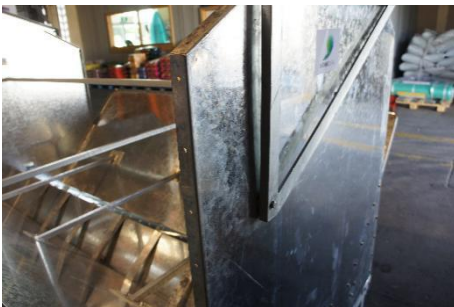
Item #25 (Short Support)



Item #26 (Support Plate)



Fit all LONG AND SHORT SUPPORT to the inside using the SUPPORT PLATE on the outside using bolts coming from the outside and washer and nuts on the inside.



STEP 9:

Select item #19 (Left Hinge), #20 (Right Hinge), #12 (Lid End x 2 units), #42 (M10*40 Bolts), #43 (M10 Nuts), #44 (M10 washer)

Item #19 (Left Hinge)



Item #20 (Right Hinge)



Item #12 (Lid End)



HAWK RURAL

3,000 LITRE FEEDER ASSEMBLY INSTRUCTIONS

(a) Attach each LID END with HINGE. (There is always a LEFT- SIDE SET and a RIGHT-SIDE SET)



(b) Bolt HINGE to END WALL using one washer under the bolt head and 3 washers as a spacer between HINGES and END WALL. Do the same process on both Left and Right side

(b)

(c)

(d)



(c) NUT to go on the inside with a washer.

(d) Tighten so it is firm but will move freely.

STEP 10:

Select item #13 (Upper Adjuster x 2 units), #14 (Bottom Adjuster x 2 units), #39 (M8*20 Stainless Steel Bolts), #40 (M8 Stainless Steel Square Cage nuts), and #41 (M8 Large Stainless Steel Washer), #50 (Divider Grill), #52 (M8*16 Bolt) and #53 (M8 Nuts)

Item #13 (Upper Adjuster)

Item #14 (Bottom Adjuster)

Item #50 (Divider Grill)



HAWK RURAL

3,000 LITRE FEEDER ASSEMBLY INSTRUCTIONS

(a) Attach the #39 and #40 to UPPER ADJUSTERS. (Please make sure the cage nut is in correct direction)

(b) Attached the UPPER ADJUSTER and DIVIDER GRILL using #52 and #53 at pre-drilled hole.

(a)



(b)



(c) Attach "UPPER ADJUSTER with DIVIDER GRILL" to RIGHT AND LEFT ADJUSTER BRACKET using #39, #40, and #41.



(d) Attach BOTTOM ADJUSTER to the BRACKET using #39, #40, and #41.



HAWK RURAL

3,000 LITRE FEEDER ASSEMBLY INSTRUCTIONS

(e) Set the UPPER ADJUSTER around 15mm from lower edge to the BASE.

(f) Adjust BOTTOM ADJUSTMENT in different level and sealant each end.

(e)



(f)



Hint: Set the LOWER ADJUSTER around 20mm below the UPPER ADJUSTER. This will allow approximate 300 grams per day.

STEP 11:

Select item #4 (Left End Extension), #5 (Right End Extension), #6 (Left End Extension with Holes) and #7 (Right End Extension with holes), and #49 (M5*20 Tech Screw)

Item #4 (Left End Extension)



Item #5 (Right End Extension)



Item #6 (Left End Extension with Holes)



Item #7 (Right End Extension with Holes)

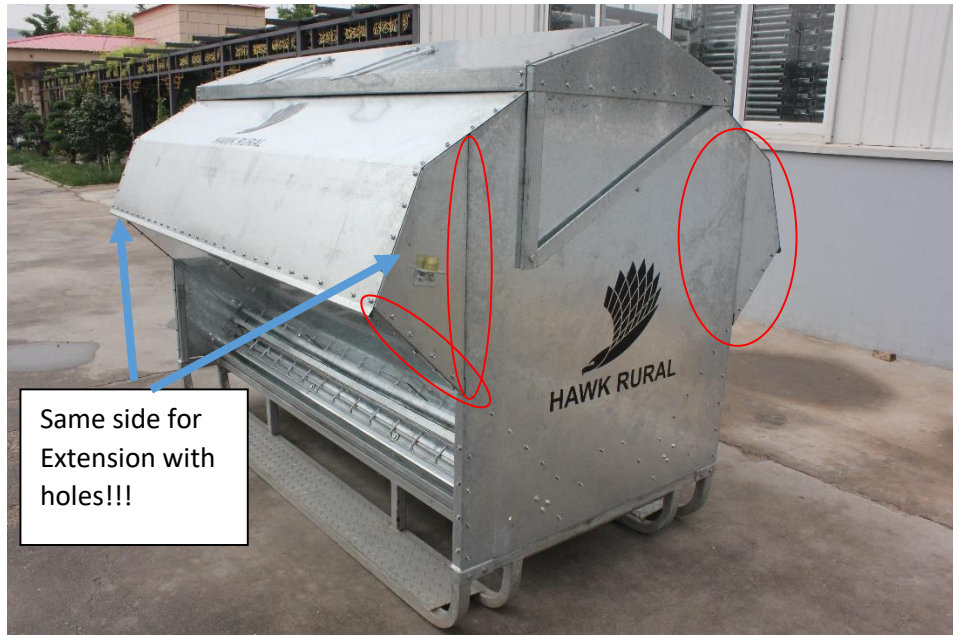


HAWK RURAL

3,000 LITRE FEEDER ASSEMBLY INSTRUCTIONS

Attach the END EXTENSIONS to pre-drilled holes on the edge of both END WALL and the BASE using #49 Self Tapping screw. Screw from the inside out. Sealant all joins!

Hints: Make sure the EXTENSION WITH HOLES must be on the same side of the feeder.



STEP 12:

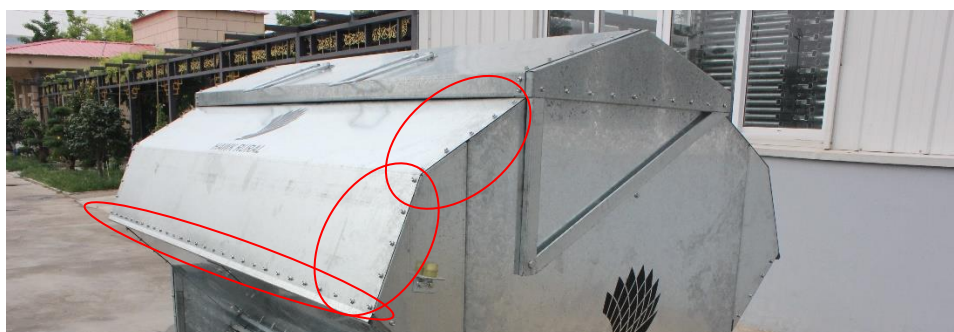
Select item #10 (Upper Board x 2 units) and #49 (M5*20 Tech Screw)

Item #10 (Upper Board)



Attached UPPER BOARD with top edge of both END WALL, side edge of END EXTENSIONS, and the BASE using #49 tech screw.

Hint: Do not tighten all the tech screw until they all line up into the pre-drilled hole!



HAWK RURAL

3,000 LITRE FEEDER ASSEMBLY INSTRUCTIONS

STEP 13:

Select item #8 (Lid), and #49 (M5*20 Tech Screw), and LID END with HINGE made at Step 9.

Item #8 (Lid)



Attach both “LID END with HINGE” to each side of LID using #49 tech screw and sealant them.

Hint: Do not tighten all the tech screw until they all line up into the pre-drilled hole!

STEP 14:

Select item #22 (Lid Handle x 2 units), #23 (Lid Handle Plate) and #46 (M6*20 Bolt), #47 (M6 Nut), #48 M6 Flat Washer)

Item #22 (Lid Handle)



Item #23 (Lid Handle Plate)



Place LID HANDLE on top and LID HANDLE PLATE at the bottom of the LID and tighten them up with #46, #47 and #48.



HAWK RURAL

3,000 LITRE FEEDER ASSEMBLY INSTRUCTIONS

STEP 15:

Select item #17 (Rubber Stick x 2 units), #18 (Angle Iron x 2 units), #35 (M8*20 Bolts), #36 (M8*20 inner six angle bolt), #37 (M8 Flat Washer), and #38 (M8 Nuts)

Item #17 (Rubber Stick)



Item #18 (Angle Iron)



Bolt the ANGLE IRON on each END EXTENSION WITH HOLE using #35, #37, and #38. Then Attach RUBBER STICK to ANGLE IRON with #36, #37 and #38



Your feeder is now assembled but now it is important to follow these final instructions:

1. Check all joins for gaps and ensure they are sealed with sealant.
2. Sweep away all metal filings as they will cause rust.
3. Spanner check all bolts to ensure they are tight enough.
4. Check that all holes have a screw in them.

