



## Post Driver – BMPD-H35



This User Manual covers the Bullmax Post Driver Component.  
Refer to the Honda User Manual for safe operation of the Honda GX35 engine.

---

# User Manual

Thank you for purchasing the Bullmax Post Driver. This machine is powered by the (Honda GX35) 4 stroke engine that is easy to use and very reliable. Please read these user instructions carefully as when followed will ensure efficient and a long working service life of the machine.

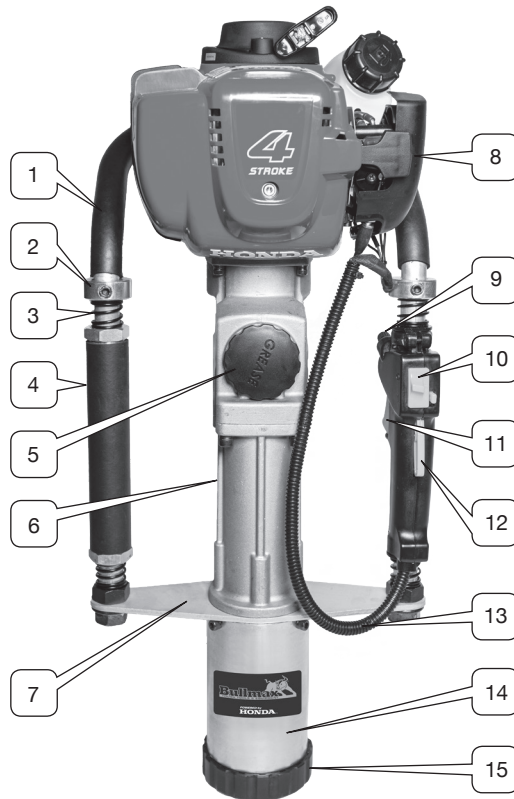
It is important to follow the user manual instructions before using this machine for your safety and to avoid physical injury and damage.

## Contents

1. Parts Diagram .....	3
2. Safe Operating Instructions .....	4
3. Main Purpose and Function .....	4
4. Preparation before use .....	5
5. Starting .....	5
6. Operation .....	5
7. Turning off the Machine .....	6
8. Technical Maintenance .....	6
9. Failure Analysis and Troubleshooting .....	6
10. Key Data of Product .....	6
11. Bullmax Post Driver Parts – Maintenance Cycle .....	7
12. Honda GX35 Engine – Maintenance Cycle .....	7
13. Parts List and Exploded View of BMPD-H35 Post Driver .....	8–10
14. Bullmax Post Driver Packing List .....	11
15. Bullmax Post Driver Warranty .....	12

## 1. List of Main Parts

No.	Name of Part	No.	Name of Part	No.	Name of Part
1	Handle Frame	2	Positioning Sleeve	3	Damping Spring
4	Handle Sleeve	5	Grease Cap	6	Hammer Case
7	Support Plate	8	Carburettor with fuel priming bubble and choke	9	Throttle Knob
10	Ignition ON/OFF switch	11	Throttle Trigger	12	Fast Idle Control
13	Throttle Cable	14	Piling Socket	15	Piling Socket Retainer



**Fig. 1**

## **2. Safe Operating Instructions**

1. The operator must wear slip-resistant safety shoes, suitable clothing, safety glasses, helmet, and earplugs.
2. While operating the machine, please keep well balanced; the user shall stand in front of Air Filter to operate the machine. While operating the machine, do not partake in any other activity.
3. While operating the machine always use both hands.
4. When lifting the machine always have engine at idle.
5. Keep any observer away from the operation area to avoid injury.
6. Select the medium speed to operate post driver.
7. Keep the handle dry and clean free of oil or fuel.
8. If operation is stopped midway; be sure to turn off the engine.
9. Pre-check before use that all bolts and screws are tight and that they have not vibrated loose from the previous day's work or transportation.
10. Gasoline is highly flammable. Therefore, replenish fuel in a well-ventilated environment. During fuel filling, engine must be turned off.
11. Do not add too much fuel and do not exceed the neck of the fuel tank. If fuel spills, wait until the fuel vaporizes completely and then start the engine.
12. After refueling, tighten the fuel tank lid. If fuel spills while operating the machine, check that the fuel tank lid is tight and check for damage to the fuel tank. If there is a fuel leak shut the machine down immediately.
13. Keep reserve fuel in a safe storage area away from fire or open flame.
14. Where the post driver is used in closed areas such as tunnels, trenches and confined spaces, ensure there is ample air circulation to avoid waste gas poisoning and suffocation.
15. When transporting ensure machine is tied down securely so as to not damage the machine.
16. Before transport, empty fuel inside fuel tank to avoid leakage.
17. Do not allow non-qualified personnel to dismantle the post driver. This will avoid internal damage of the machine, shortened service life of the post driver or accidents. To do so will void the warranty.

## **3. Main Purpose and Function**

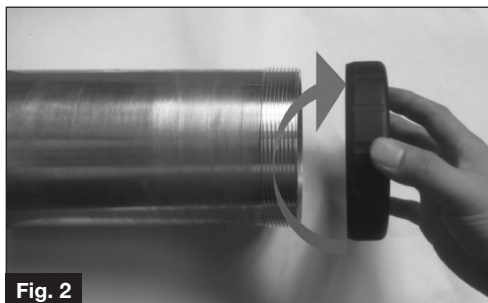
- 3.1 **Purpose:** It can be used for driving in star pickets, pipe, form work pins for use on fences, barriers and construction.
- 3.2 **Function**
  - 3.2.1 It is a handheld gasoline post driver that is light weight and produces low emissions.
  - 3.2.2 The product is an excellent design and engineered to be easy to use with minimal effort and powerful operating efficiency. The operator can achieve 360° all-round operation.
  - 3.2.3 It can regulate impact energy and impact frequency and be applied to a variety of posts with diameter larger than 20mm (inclusive) and smaller less than 80mm (inclusive).
  - 3.2.4 Advantage: Saves the trouble of using heavy machines such as generator, air compressor, hoses, leads and vehicle.
  - 3.2.5 The operating handle of the machine is rubber and plastic sponge which can greatly reduce the recoil force of the machine. It features a two-way Dampening Spring which makes it more comfortable to use.

## **4. Preparation before Use**

### **4.1 Piling Socket**

- 4.1.1 Install or replace Piling Socket Retainer selecting the correct size for the picket to be driven. Select from the 4 sizes that are supplied with your machine – 20~45mm, > 55mm, >73mm, >80mm.

See Fig. 2.



4.2 **Fuel** – Refer to Honda GX35 User Manual.

4.3 **Checking of Air Filter** – Refer to Honda GX35 User Manual.

## **5. Starting**

- 5.1 Turn ignition switch to the on position, prime fuel by depressing the fuel bubble on the carburettor, turn choke to the on position, pull start.
- 5.2 Turn choke to the off position.
- 5.3 Please do not pull up the starter handle during operation since fast rotation of the part may lead to damage of the starter.

## **6. Operation**

- 6.1 After the engine is started, allow 5 minutes for the machine to warm up.
- 6.2 When the engine has warmed up, press throttle button to the appropriate position according to the required impact energy.  
Note: Operate the new post driver at low or medium-speed in the first 20 hours of operation and the maximum throttle shall not be used in order to extend the service life.
- 6.3 Operating speed of post driver is most effective at medium speed.

## **7. Turning off the Machine**

- 7.1 Release throttle button and allow the machine to idle for 3-5 minutes.
- 7.2 Push ignition switch to the off position. See Fig. 3.



## **8. Technical Maintenance**

- 8.1 **Engine** – Refer to Honda GX35 User Manual.
- 8.2 **Spark Plug** – Refer to Honda GX35 User Manual.
- 8.3 **Muffler** – Refer to Honda GX35 User Manual.
- 8.4 Check grease every 50 hours of operation.
- 8.5 Do not overfill.
- 8.6 **Impact Cylinder Lubrication**
  - 8.6.1 After initial one hours work – replenish grease around big end journal using no more than one tablespoon of Bullmax Rock Hammer Grease.
  - 8.6.2 100ml tube of grease is supplied in your tool kit.
  - 8.6.3 Use only genuine Bullmax Rock Hammer Grease – Call 02 9521 6300 or your local dealer.

## **9. Failure Analysis and Troubleshooting**

Refer to Honda GX35 User Manual.

**Example:** The machine is working normally but the work efficiency is very low.  
The rubber ring of impact piston is aged and worn → Replace.

**Please contact Bullmax 02 9521 6300 for maintenance advice and parts.**

## **10. Honda Engine Specifications**

Refer to Honda GX35 User Manual.

## **11. Bullmax Post Driver Parts – Maintenance Cycle**

The following Data is for operating under normal conditions. If operating in the conditions such as thick dust or long work hours, or hot conditions; the maintenance cycle should be shortened correspondingly.		Before work each day	After work or every day	After refilling fuel	Every Week	Every Month	Every 50 hours of operation	If necessary
The whole machine	Spanner check (tighten all bolts and screws)	✓		✓				
	Clean		✓					
Control Handle Frame/ Stop button	Function check	✓		✓				
Reduction gear box/ Impact cylinder	Clean						✓	
	Add grease							✓
Silencer	Check						✓	
	Remove carbon deposit							✓
Cylinder Cooling Fin	Check						✓	
	Clean							✓

## **12. Honda GX35 Engine – Maintenance Cycle**

Refer to Honda GX35 User Manual.

### 13. Parts List and Exploded View of BMPD – Honda GX35

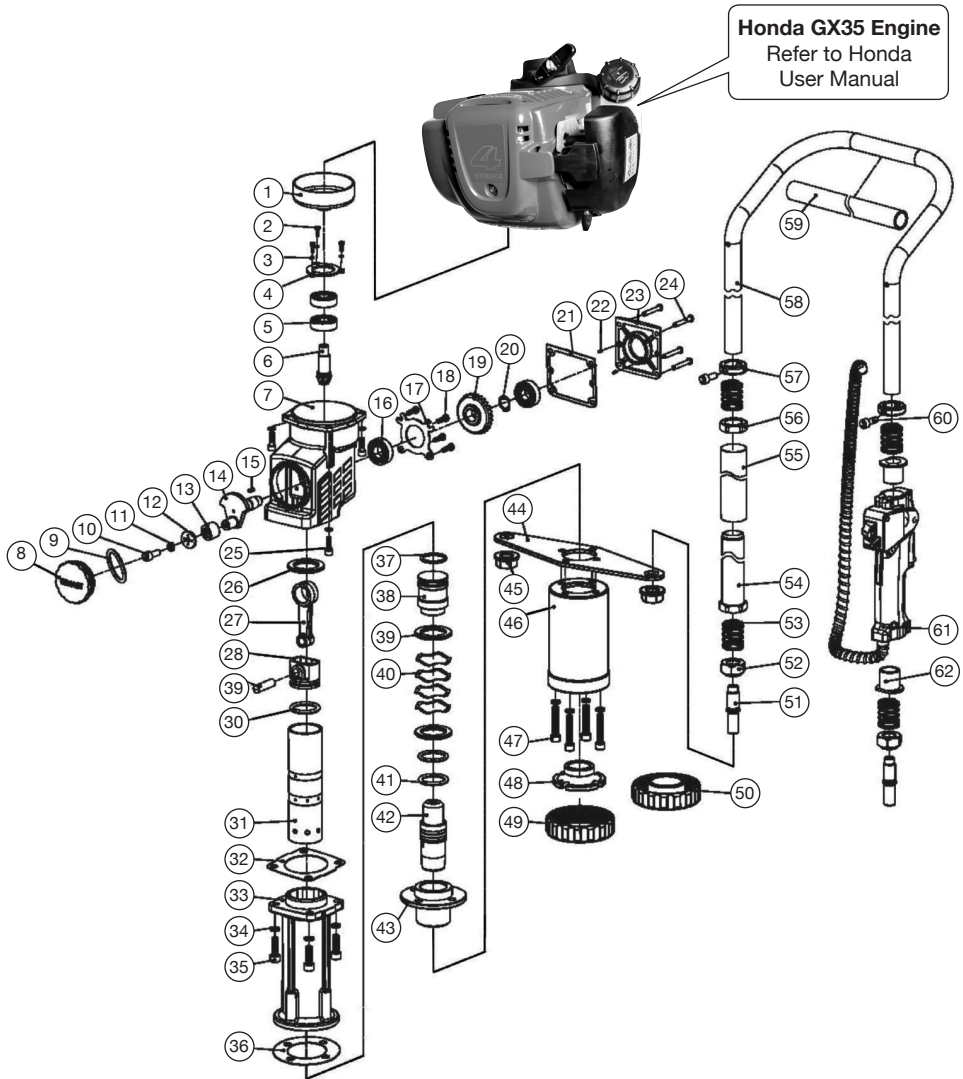
Parts No.	Name	Qty
1	Driven Disk	1
2	Inner Hexagon Cylindrical -head ScrewM5x12	3
3	Elastic Washer 5	3
4	Bearing Pressing Plate	1
5	Deep Groove Ball Bearings 6202-2RS	3
6	Small Bevel Gear 7-2	1
7	Reduction Gearbox	1
8	Grease Cap	1
9	Grease Cap O-RING $\phi$ 1.5x50	1
10	Inner Hexagon Cylindrical -head ScrewM6x16	1
11	Elastic Washer 6	9
12	Retainer	1
13	Needle Roller Bearing-Hk152316	1
14	Impact Crankshaft	1
15	A Type Common Flat Key 5x5x10	1
16	Deep Groove Ball Bearings 6003-2RS	1
17	6003Bearing Pressing Plate	1
18	Cross Pan Head Screw-M5x14	4
19	Large Bevel Gear 28-2	1
20	Shaft Retainer16	1
21	Rear Placket	1
22	Round Pin4x10	2
23	Reduction Gearbox Cover	1

Parts No.	Name	Qty
24	Inner Hexagon Cylindrical -head ScrewM5x20	4
25	Inner Hexagon Cylindrical -head ScrewM6x20	8
26	Cylinder Gaskets	1
27	Impact Connecting Rod	1
28	Impact Piston	1
29	Impact Piston Pin	1
30	O-ring Impact Piston	1
31	Impact Cylinder	1
32	Middle Placket	1
33	Hammer Case	1
34	Elastic Washer 8	8
35	Inner Hexagon Cylindrical -head ScrewM8x20	4
36	Front Placket	1
37	Hammer O-circle	1
38	Hammer	1
39	Crush Pad	2
40	Waved Gasket $\phi$ 39x46x0.5	6
41	Shock O-Circle	2
42	Shock	1
43	Support Plate	1
44	Hexagon Flange Nut M18x1.5	2
45	Impact Socket	1
46	Piling Socket	1
47	Inner Hexagon Cylindrical -head ScrewM8x40	4
48	Inner Pile Head 77	1
49	Piling Socket Retainer 80	1



<b>Parts No.</b>	<b>Name</b>	<b>Qty</b>
50	Piling Socket Retainer 45	1
51	Connecting Thread Head	2
52	Step Nut	2
53	Handle Spring 38x27xφ2.5	4
54	Handle Sleeve	1
55	Handle Soft Sleeve	1
56	Handle Nut	1
57	Positioning Sleeve	2
58	Handle Frame (four-stroke)	1
59	Handle Frame Soft Sleeve	1
60	Inner Hexagon Cylindrical head ScrewM6x40	2
61	Combination Switch	1
62	Switch Handle Guide Sleeve	2

# Exploded View of Bullmax Post Driver BMPD-H35 with Honda GX35 Engine



## **14. Bullmax Post Driver Packing List**

1.	Bullmax Post Driver with Honda GX35 engine .....	1
2a.	Piling Socket Retainer 20-45mm .....	1
2b.	Piling Socket Retainer 46-55mm .....	1
2c.	Piling Socket Retainer 56-73mm .....	1
2d.	Piling Socket Retainer 74-80mm .....	1
3.	Bullmax Rock Hammer Grease - 50ml .....	1
4.	Bullmax User Manual .....	1
5.	Bullmax Warranty Card .....	1
6.	Tool Kit (Spark plug spanner, Allen key spanners, 4mm, 5mm, 6mm, T-piece Allen key spanner, straight edge screwdriver, open ended spanners, 8mm & 10mm.) .....	1

## **15. Bullmax Post Driver Warranty**

The Bullmax post driver is assembled in Australia and is inspected and tested before leaving our factory.

The Bullmax post driver has a 3-year Honda engine warranty and a Bullmax 1-year post driver parts warranty. Bullmax undertakes as its option to repair and replace free of charge each product or part thereof on the following conditions.

The warranty is valid from the date of purchase and when the machine is used in accordance with the information supplied in the instruction manual. (Please keep proof of purchase)

### **The Bullmax warranty does not cover the following**

- Normal wear and tear
- Commercial use
- Damaged caused due to failing to follow the safety and operating instructions, which includes due to lack of maintenance, cleaning and care of the post driver.
- Parts that may need to be replaced due to normal wear and tear and lack of maintenance.
- Incorrect usage and negligence which causes damages to the machine.
- Altering or modifying the post driver.
- Use of unsuitable parts used for repairs that were not conducted by an authorised Bullmax repairer.
- Using the post driver in an unsuitable environment and not for the purpose it was intended for.
- Unsuitable transportation of the post driver, involved in an accident or not securely packaged to avoid damage in transit or storage.

### **How to make a claim**

If a fault has occurred within the warranty period the consumer can make a claim, by adhering to the following.

- Stop using the post driver immediately to avoid further damage to the machine.
- Contact Bullmax at [info@bullmax.com.au](mailto:info@bullmax.com.au) or alternatively by returning the post driver to the place of purchase and contact can be made.

Our goods come with guarantees that cannot be excluded under Australian Consumer Law. You are entitled to have the goods repaired, replaced or a refund for a major failure.