

Owner's Manual & Safety Instructions

Save This Manual Keep this manual for the safety warnings and precautions, assembly, operating, inspection, maintenance and cleaning procedures. Write the product's serial number in the back of the manual near the assembly diagram (or month and year of purchase if product has no number). Keep this manual and the receipt in a safe and dry place for future reference.



EARTH AUGER

MODEL: BMEA-H35



MODEL: BMEA-H50



MODEL: BMEAW-H50W



When unpacking, make sure that the product is intact and undamaged. If any parts are missing or broken, please email info@bullmax.com.au as soon as possible

Copyright © 2015 by HAWK GROUP PTY LTD. All rights reserved.
No portion of this manual or any artwork contained herein may be reproduced in any shape or form without the express written consent of Hawk Group.
Diagrams within this manual may not be drawn proportionally. Due to continuing improvements, actual product may differ slightly from the product described herein.
Tools required for assembly and service may not be included.

WARNING





Read this material before using this product.
Failure to do so can result in serious injury.
SAVE THIS MANUAL

Table of contents

1. Introduction
2. Specifications
3. Precautions
4. Selecting the correct auger and assembly
5. Starting engine
6. Drilling
7. Air filter
8. Spark plug
9. Gear
10. Fuel filter
11. Cleaning muffler
12. Maintenance
13. Parts lists and exploded diagrams
14. Warranty












1. Introduction

Thanks for choosing a BULLMAX Earth Auger. Before starting and operating your new Earth Auger, please carefully read the operating instructions in this Owner Manual and keep it close by for reference. The Manual is designed for several different machines and therefore may have some variations in the diagrams or descriptions to the actual model you have purchased, however all operational features, how it works and safety instructions are the same.

 ⚠ DANGER	
Using an engine indoors CAN KILL YOU IN MINUTES. Engine exhaust contains carbon monoxide. This is a poison you cannot see or smell.	
	
NEVER use inside a home or garage, EVEN IF doors and windows are open.	
	Only use OUTSIDE and far away from windows, doors, and vents.

2. Specifications

Name	BMEA-H35	BMEA-H50/BMEAW-H50W
Engine	Honda GX35	Honda GX50
Engine capacity	Refer to Honda Engine Manual	
Power		
Fuel tank capacity		
Auger length/diameter	Dia:80/100/120/150/200/250/300mm Length:800/1000mm	
Weight(N.W/G.W)	8.5/10kg	10.5/12.5kg

WARNING SYMBOLS AND DEFINITIONS	
	This is the safety alert symbol. It is used to alert you to potential personal injury hazards. Obey all safety messages that follow this symbol to avoid possible injury or death.
	This is the safety alert symbol. It is used to alert you to potential personal injury hazards. Obey all safety messages that follow this symbol to avoid possible injury or death.
	WARNING marking concerning Risk of Hearing Loss. Wear hearing protection.
	WARNING marking concerning Risk of Fire while handling fuel. Do not smoke while handling fuel.
	WARNING EXTREMELY HOT SURFACE. Do not touch !!!
	WARNING making concerning Risk of Respiratory Injury Keep your feet away from auger.
	WARNING making concerning Risk of Respiratory Injury Keep loose clothing, scarf, jewellery or cord/rope away from auger.
	READ the manual before operating the auger.
	Wear PROTECTIVE GLASSES when operating the auger.
	Wear PROTECTIVE BOOT when operating the auger.
	Wear PROTECTIVE GLOVE when operating the auger.



3. Precautions

1. To be used only by adults.
2. Before operating the machine ensure you have read and understand the operating manual
3. Never use the machine if you are tired or under the influence of alcohol or drugs.
4. If someone else is to use the machine, make sure they have read the operating manual and are familiar with how to operate the machine safely.
5. When operating the machine, always use non-slip steel cap work boots, protective gloves, safety glasses, earmuffs and helmet.
6. Always remove jewellery, scarf and loose fitting clothing.
7. Before starting engine, ensure area around you is clear of dry grass or inflammable materials or fire.
8. Operate engine with plenty of ventilation
9. Always turn the engine off before attempting to remove auger
10. Regularly inspect auger for cracks or damage and discard if they appear.
11. Stop engine and allow engine to cool down when refuelling, do not smoke while refuelling and do not refuel near naked flame.
12. Do not remove cap while engine is running and do not start the machine within 3 metres of spilt fuel.
13. Keep handles dry and clean.
14. Make sure auger is not stuck before starting.
15. Do not touch auger while engine is running or carry out any adjustment or servicing.
16. Operate the machine using 2 hands and brace yourself to anticipate load.
Keep away from muffler and auger.
17. Only move the auger to another operating position while engine is at idle.
18. Follow servicing timeframes and carry out repairs as required.
19. If recoil pull start fails, do not attempt to repair as this can cause injury. Refer to Honda user manual.
20. For major servicing requirements that are outside the scope of this manual, please call Bullmax Service number for advice.
21. When your machine is of no further use, please dispose of it in an environmentally sensitive manner.



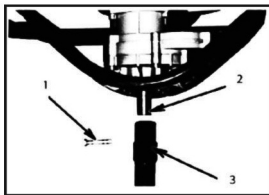
4. Selecting the correct auger and assembly

Choose auger size according to the diameter of the hole you require.

If the depth of the hole required is more than the length of the auger you can add the 500mm extension. In hard ground it may be easier to drill a pilot hole with the smallest auger in your kit and then use the larger size to enlarge.

Assembly:

See Pic. 1. Connect spring and auger (3) to output shaft (2) and insert pin (1) to attach.



Pic.1

(Spring not required with BMEAW-H50W)

5. Starting engine: Refer to Honda User Manual

6. Drilling

1. Place the auger in place where you intend to drill and then start engine.
2. Hold the handle tight with both hands and stand with your legs apart to brace yourself and anticipate load.
3. Always be aware of unusual noise or any extra vibration. If this occurs, immediately stop the machine and check for damage to the machine.
4. To stop the machine turn ignition switch to STOP position.

7. Air filter: Refer to Honda User Manual



8. Spark plug: Refer to Honda User Manual

9. Gear

Every 50 hours of operation, check lubrication level in gear box. To check, remove filler plug on the side of the gear box and check that the level is full. If level is low, top up with universal lithium grease.

10. Fuel filter: Refer to Honda User Manual

11. Cleaning muffler: Refer to Honda User Manual

12. Maintenance

Regular maintenance can be carried out by the operator but major repairs and service should always be referred to an authorised Bullmax Service Centre or an authorised Honda Service Centre.

DAILY MAINTENANCE –

- Check for cracks and any broken parts to the complete earth auger; including frame and augers themselves
- Spanner check all bolts, nuts and screws.

WEEKLY MAINTENANCE –

- Clean spark plug.
 - Clean air filter.
- } Refer to Honda User Manual



Troubleshooting

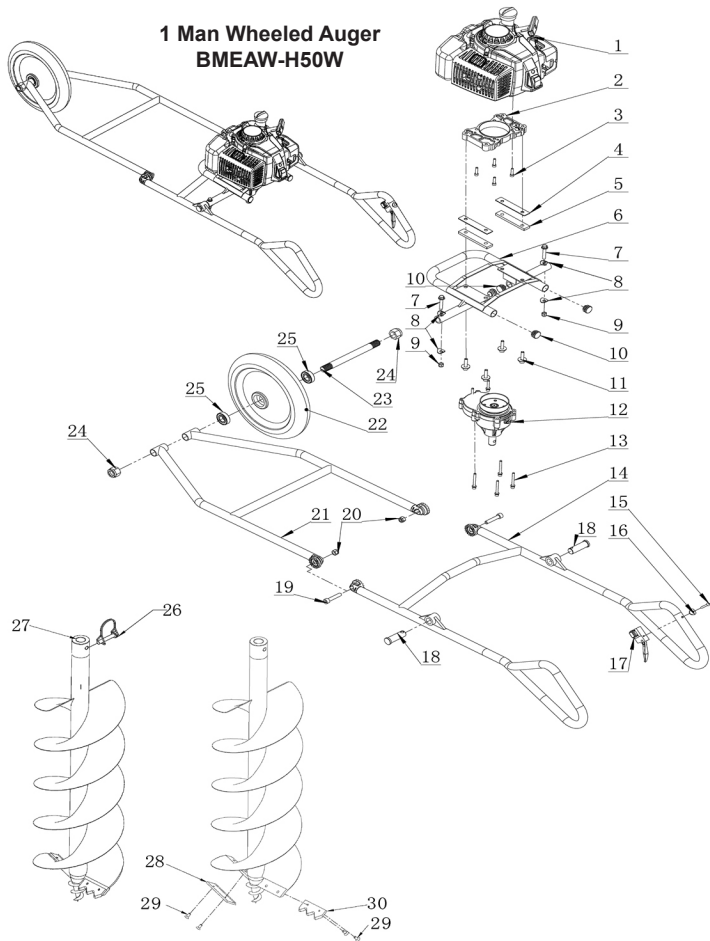
Problem	Possible Causes	Probable Solutions
Engine will not start	FUEL RELATED: <ol style="list-style-type: none"> 1. Low or no fuel in fuel tank or improper fuel. 2. Choke not in start position, especially with cold Engine. 3. Low quality or deteriorated, old gasoline. 4. Carburetor not primed. 5. Dirty fuel passageways blocking fuel flow. 6. Carburetor needle stuck. Fuel can be smelled in the air. 7. Too much fuel in chamber. This can be caused by the carburetor needle sticking. 8. Blocked Fuel Cap Set or Fuel Filter. 	<p style="text-align: center;">Refer to Honda User Manual</p>
	IGNITION (SPARK) RELATED: <ol style="list-style-type: none"> 1. Spark plug wire not connected securely. 2. Spark plug electrode wet or dirty. 3. Incorrect spark plug gap. 4. Spark plug wire or spark plug broken. 5. Incorrect spark timing or faulty ignition system. 	
	COMPRESSION RELATED: <ol style="list-style-type: none"> 1. Cylinder not lubricated. Problem after long storage periods. 2. Loose or broken spark plug. (Hissing noise will occur when trying to start.) 3. Loose cylinder head or damaged head gasket. (Hissing noise will occur when trying to start.) 	
Auger rotates while Engine is idle	Engine idle Speed set too high.	Reset carburetor Idle Screw to lower idle (RPM) speed.
Gearbox feels exceptionally hot to the touch	Low level of gear oil.	Immediately turn off Auger. Allow gearbox to completely cool. Then, fill gearbox with Lithium Grease.

Problem	Possible Causes	Probable Solutions
Power switch does not turn off Engine	Faulty Power switch.	Discontinue using Auger until the tool is repaired by a qualified service technician. Refer to Honda user manual.
Engine runs, but Bit is not rotating	<ol style="list-style-type: none"> 1. Throttle not properly used. 2. Throttle cable not properly adjusted. 3. Bit stuck in rocks, roots, etc. 	<ol style="list-style-type: none"> 1. Make sure to fully squeeze the Throttle. 2. Have a qualified service technician adjust Throttle cable. 3. Remove Bit from hole and clear hole of obstructions.
Engine misfires	<ol style="list-style-type: none"> 1. Spark plug wire loose. 2. Incorrect spark plug gap or damaged spark plug. 3. Defective spark plug wire. 4. Old or low quality gasoline. 5. Incorrect compression. 	Refer to Honda User Manual.
Engine stops suddenly	<ol style="list-style-type: none"> 1. Fuel tank empty or full of impure, low quality gasoline. 2. Defective fuel tank cap creating vacuum, preventing proper fuel flow. 3. Improper idle speed. 4. Incorrect timing, or clogged carburetor. 	Refer to Honda User Manual.
Engine knocks	<ol style="list-style-type: none"> 1. Fuel tank empty or full of impure, low quality gasoline. 2. Engine overloaded. 3. Incorrect spark timing, deposit buildup, worn Engine, or other mechanical problems. 	Refer to Honda User Manual.
Engine backfires	<ol style="list-style-type: none"> 1. Fuel tank empty or full of impure, low quality gasoline. 2. Engine too cold. 3. Choke not open after Engine warm. 4. Engine not properly adjusted for high altitude operation. 5. Intake valve stuck, choke stuck, incorrect timing, clogged carburetor, or overheated Engine. 	Refer to Honda User Manual.

13. Parts Lists and Exploded Diagrams

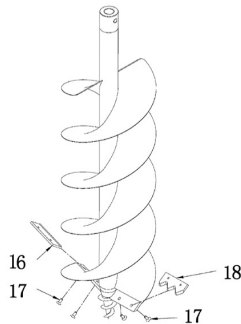
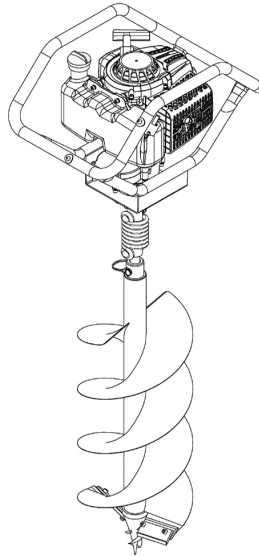
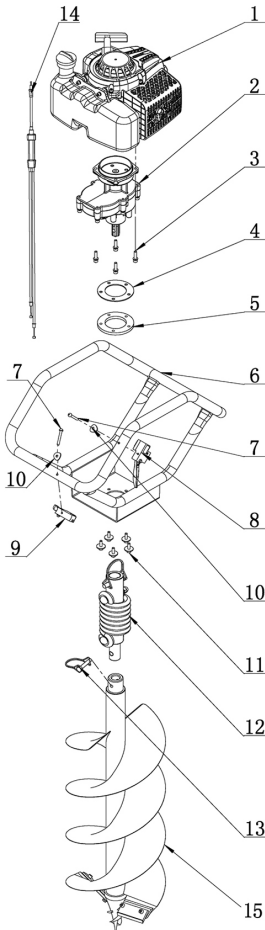
BMEAW-H50W			
No.	Bullmax 1 Man Wheeled Auger	Qty	
1	Engine ASSY Honda GX50	1	pcs
2	Connection board	1	pcs
3	Screw M6*25	4	pcs
4	AVS (Metal)	2	pcs
5	AVS (Rubber)	2	pcs
6	Mount frame	1	pcs
7	Screw M8*45	2	pcs
8	Umbrella metal gasket M8.5*20*1.5	4	pcs
9	Screw nut M8	2	pcs
10	Blockage cover	2	pcs
11	Screw M8*35	4	pcs
12	Gear case assy – HY-GC02-2007	1	pcs
13	Screw M6*50	4	pcs
14	Armrest	1	pcs
15	Screw M5*40	1	pcs
16	Umbrella metal gasket M6	1	pcs
17	ON/OFF & Trigger ASSY	1	pcs
17B	Throttle cable	1	pcs
18	Short shaft (size: 65*20*8)	2	pcs
19	Screw M10*50	2	pcs
20	Screw nut M10	2	pcs
21	Wheel frame	1	pcs
22	Wheel 12"	1	pcs
23	Screw M20*220	1	pcs
24	Screw nut M20	2	pcs
25	Bearing 6004-2RS	2	pcs
26	D Type clip	1	pcs
27	HY-HJJQ-S Auger bit (φ250* L 800mm)	1	pcs
28	HY-HJJQ-S Auger bit blade (φ250mm)	1	pcs
29	Screw M5*12	2	pcs
30	HY-HJJQ-S Auger bit Saw teeth blade (φ250mm)	1	pcs

**1 Man Wheeled Auger
 BMEAW-H50W**



BMEA-H50			
No.	Bullmax 2 Man Earth Auger	Qty	
1	Engine ASSY Honda GX50	1	pcs
2	Gear case assy – HY-GC03-2012	1	pcs
3	Screw M6*25	4	pcs
4	AVS (Metal)	1	pcs
5	AVS (Rubber)	1	pcs
6	Handle	1	pcs
7	Screw M5*40	2	pcs
8	ON/OFF ASSY	1	pcs
9	Trigger with ON/OFF	1	pcs
10	Umbrella gasket	2	pcs
11	Screw M6*25	5	pcs
12	Spring reducer ASSY (1-10)	1	pcs
13	D Type clip	1	pcs
14	Double throttle line	1	pcs
15	HY-HJJQ-S Auger bit (φ150* L 800mm)	1	pcs
	HY-HJJQ-S Auger bit (φ200* L 800mm)	1	pcs
	HY-HJJQ-S Auger bit (φ300* L 800mm)	1	pcs
16	HY-HJJQ-S Auger bit blade (φ150mm)	1	pcs
	HY-HJJQ-S Auger bit blade (φ200mm)	1	pcs
	HY-HJJQ-S Auger bit blade (φ300mm)	1	pcs
17	Screw M5*12	2	pcs
18	HY-HJJQ-S Auger bit Saw teeth blade (φ150mm)	1	pcs
	HY-HJJQ-S Auger bit Saw teeth blade (φ200mm)	1	pcs
	HY-HJJQ-S Auger bit Saw teeth blade (φ300mm)	1	pcs

**2 Man Earth Auger
 BMEA-H50**



150-800



200-800

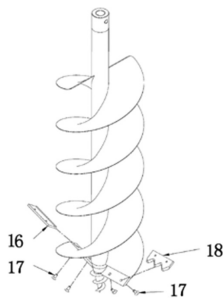
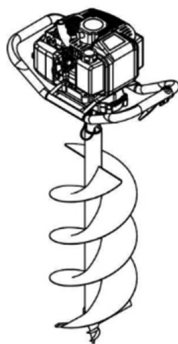
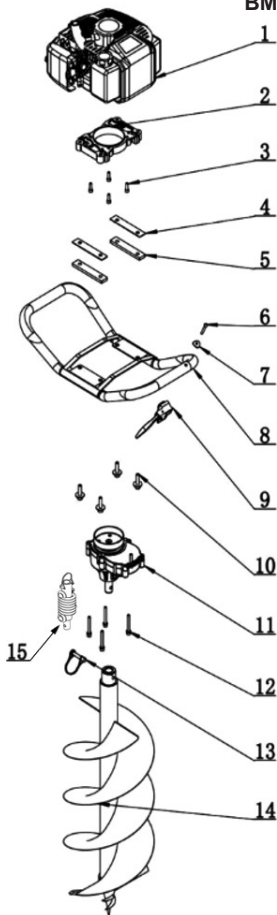


300-800

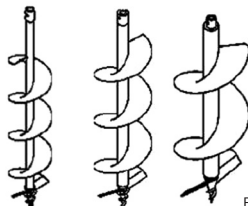


BMEA-H35			
No.	Bullmax 1 Man Earth Auger	Qty	
1	Engine Assy: Honda GX35	1	pcs
2	Contractor plate	1	pcs
3	Screw M6*25	4	pcs
4	AVS (Metal)	2	pcs
5	AVS (Rubber)	2	pcs
6	Screw	1	pcs
7	Umbrella gasket	1	pcs
8	handle	1	pcs
9	Trigger	1	pcs
9B	Throttle cable	1	pcs
10	Screw	4	pcs
11	Gear case assy – HY-GC03-2012	1	pcs
12	Screw	4	pcs
13	D-Clip	1	pcs
14	HY-HJJQ-S Auger bit (ϕ 100* L 800mm)	1	pcs
	HY-HJJQ-S Auger bit (ϕ 150* L 800mm)	1	pcs
	HY-HJJQ-S Auger bit (ϕ 200* L 800mm)	1	pcs
15	Spring reducer ASSY (1-10)	1	pcs
16	HY-HJJQ-S Auger bit blade (ϕ 100mm)	1	pcs
	HY-HJJQ-S Auger bit blade (ϕ 150mm)	1	pcs
	HY-HJJQ-S Auger bit blade (ϕ 200mm)	1	pcs
17	Screw M5*12	2	pcs
18	HY-HJJQ-S Auger bit Saw teeth blade (ϕ 100mm)	1	pcs
	HY-HJJQ-S Auger bit Saw teeth blade (ϕ 150mm)	1	pcs
	HY-HJJQ-S Auger bit Saw teeth blade (ϕ 200mm)	1	pcs

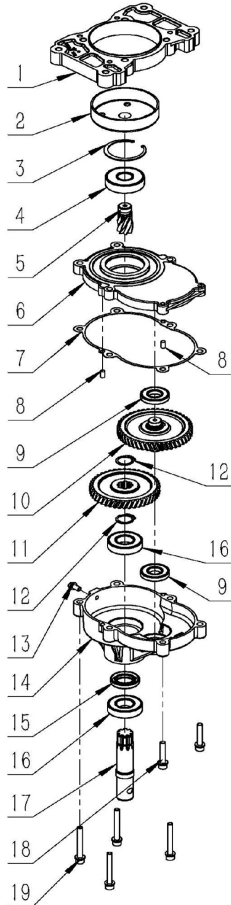
**1 Man Earth Auger
 BMEA-H35**



100-800 150-800 200-800

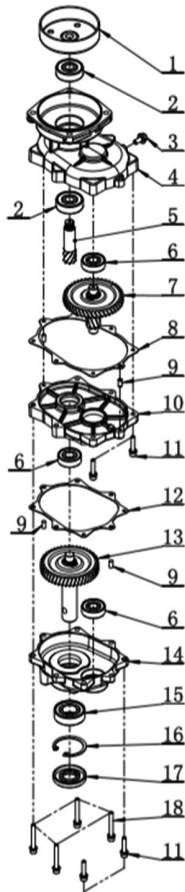


Gear case ASSY (for BMEAW-H50W)			
BMEAW-H50W: Gear box model #: HY-GC02-2007			
No.	Bullmax 1 Man Wheeled Earth Auger	Qty	
1	Connection board	1	pcs
2	Clutch drum	1	pcs
3	Spring clip 47mm	1	pcs
4	Bearing 6303-2RS	1	pcs
5	Input shaft	1	pcs
6	Up cover	1	pcs
7	Gear case gasket	1	pcs
8	Locate nut 5*10	2	pcs
9	Bearing R10	2	pcs
10	Double gearwheel	1	pcs
11	Output gearwheel	1	pcs
12	Spring clip 19mm	2	pcs
13	Screw M6*10	1	pcs
14	Gear case	1	pcs
15	Oil seal 20*35*7	1	pcs
16	Bearing 6004-2RS	2	pcs
17	Output shaft	1	pcs
18	Screw M6*38	2	pcs
19	Screw M6*50	4	pcs

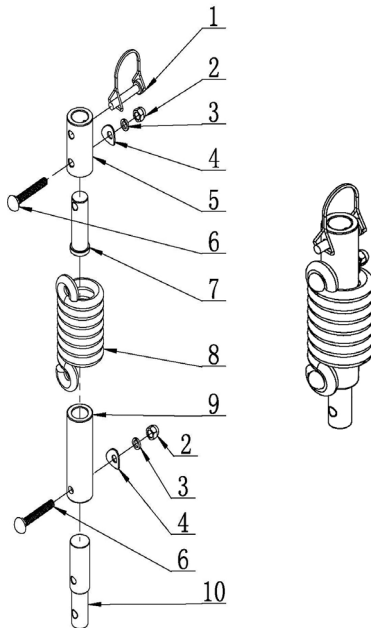


**Gear case ASSY
(for BMEA-H35 & BMEA-H50)**
BMEA-H35: Gear box model #: HY-GC03-2012
BMEA-H50: Gear box model #: HY-GC03-2012

No.	Bullmax 1 Man and 2 Man Earth Auger	Qty	
1	Clutch drum	1	pcs
2	Bearing 6301-2RS	2	pcs
3	Screw M6x10	1	pcs
4	Gear case - Top	1	pcs
5	Input shaft	1	pcs
6	Bearing 6201-2RS	3	pcs
7	Big gear wheel	1	pcs
8	Gear case gasket	1	pcs
9	Nut 1E40	4	pcs
10	Gear case - middle	1	pcs
11	Screw M5x25	4	pcs
12	Gear case gasket	1	pcs
13	Output gear wheel	1	pcs
14	Gear case - bottom	1	pcs
15	Bearing 6004-2RS	1	pcs
16	Spring clip 42mm	1	pcs
17	Oil Seal 20x45x7	1	pcs
18	Screw M5x40	4	pcs



Spring reducer ASSY (1-10)		
No.	Bullmax Earth Auger Cushioning Spring	Qty
1	D Type clip	1 pcs
2	Screw nut M8	2 pcs
3	Spring gasket	2 pcs
4	Umbrella metal gasket M8.5*20*1.5	2 pcs
5	B Casing	1 pcs
6	Screw M8*55	2 pcs
7	B shaft	1 pcs
8	Spring	1 pcs
9	A Casing	1 pcs
10	A shaft	1 pcs





14. Warranty

Engine – Genuine Honda 3yr warranty. Refer Honda warranty terms and conditions.

Gear Box and Auger Assy –

This product is warranted by Bullmax to the original purchaser, to be free from defects in material and workmanship under normal use for a period of 12 months from the date of purchase. During the warranty period, and upon proof of purchase, the product will be repaired or replaced (with the same or similar model at the manufacturers option), without charge for either parts or labour. In case of a defect please contact the dealer where you originally purchased this product.

The warranty will not apply to this product if it has been misused, abused or altered in any way. Without limiting the foregoing, damage caused by dropping the machine, bent parts or evidence of wrong fuel are presumed to be defects resulting from misuse or abuse.

Exemptions from responsibility –

This product is warranted by the manufacturer to the original purchaser, to be free from defects in material and workmanship under normal use for a period of 12 months from the date of purchase. During the warranty period, and upon proof of purchase, the product will be repaired or replaced (with the same or similar model at the manufacturers option), without charge for either parts or labour. In case of a defect please contact the dealer where you originally purchased this product.

The manufacturer or his representatives, assume no responsibility for any direct or indirect consequential damage or loss of profits by any disaster (earthquake, storm, flood ...) fire, accident or an act of any third party and / or a usage in any other but the usual conditions.

The manufacturer or his representatives, assume no responsibility for any direct or indirect consequential damage or loss of profits caused by usage other than explained in the Owner's Manual.

The manufacturer or his representatives, assume no responsibility for any direct or indirect consequential damage caused by the machine impacting against other products.





WARRANTY DOESN'T EXTEND TO THE FOLLOWING CASES:

1. If the serial number has been tampered with, removed or changed.
2. The cost of maintaining the machine, servicing and normal wear & tear.
3. If machine has been modified or altered to enhance performance or attempting to make the machine perform work other than that described in the Owner's Manual.
4. If major service has been carried out by anyone other than an authorized service centre.
Warranty will cease from the time unauthorized repairs are carried out.
5. Damage caused by misuse, operator error or negligence.
6. Damage caused by use of improper fuel.
7. Acts of God and/or actions of a third party.

PLEASE READ THE FOLLOWING CAREFULLY

THE MANUFACTURER AND/OR DISTRIBUTOR HAS PROVIDED THE PARTS LIST AND ASSEMBLY DIAGRAM IN THIS MANUAL AS A REFERENCE TOOL ONLY. NEITHER THE MANUFACTURER NOR DISTRIBUTOR MAKES ANY REPRESENTATION OR WARRANTY OF ANY KIND TO THE BUYER THAT HE OR SHE IS QUALIFIED TO MAKE ANY REPAIRS TO THE PRODUCT, OR THAT HE OR SHE IS QUALIFIED TO REPLACE ANY PARTS OF THE PRODUCT. IN FACT, THE MANUFACTURER AND/OR DISTRIBUTOR EXPRESSLY STATES THAT ALL REPAIRS AND PARTS REPLACEMENTS SHOULD BE UNDERTAKEN BY CERTIFIED AND LICENSED TECHNICIANS, AND NOT BY THE BUYER. THE BUYER ASSUMES ALL RISK AND LIABILITY ARISING OUT OF HIS OR HER REPAIRS TO THE ORIGINAL PRODUCT OR REPLACEMENT PARTS THERETO, OR ARISING OUT OF HIS OR HER INSTALLATION OF REPLACEMENT PARTS THERETO.

Record Engine Serial Number Here: _____

Record Product's Serial Number Here: _____

Note: If product has no serial number, record month and year of purchase instead.

Note: Some parts are listed and shown for illustration purposes only, are not available individually as replacement parts.

For all enquiries email info@bullmax.com.au



Hawk Group PTY LTD
Defects Warranty provisions

1. Length of Coverage

Hawk Group warrants to a first retail purchaser that the gear box and auger assy is free from defects in materials and workmanship that cause the failure of warranted parts for a period of one year after the date of delivery to the first retail purchaser.

2. No Charge Repair or Replacement

Repair or replacement of any warranted part will be performed at no charge to the owner if the work is performed through a warranty station authorized by Hawk Group.

3. Consequential Damages Coverage

Coverage under this warranty shall also extend to the failure of any gear box components caused by the failure of any warranted part while it is still covered under this warranty.

4. Coverage Exclusions

Warranty claims shall be filed in accordance with the provisions of the Hawk Group warranty policy explained in the box at the top of the previous page. Hawk Group shall not be liable for any loss of use for any alternative usage, for any damage to goods, loss of time, or inconvenience.

Warranty coverage shall also be excluded for any part which fails, malfunctions, or is damaged due to failure to follow the maintenance and operating instructions set forth in the Owner's Manual including, but not limited to:

- a) Use of parts which are not authorized by Hawk Group
- b) Improper installation, adjustment or repair of the engine or of any warranted part unless performed by an authorized warranty centre
- c) Failure to follow recommendations on fuel use contained in the Owner's Manual
- d) Improper or inadequate maintenance of any warranted parts
- e) Repairs performed outside of the authorized warranty service dealers
- f) Alterations by changing, adding to or removing parts from the engine.

5. Service and Maintenance

Component parts which are not scheduled for replacement as required maintenance or are scheduled only for regular inspection to the effect of "repair or replace as necessary" are warranted for the warranty period. Any warranted part which is scheduled for replacement as required maintenance is warranted for the period of time up to the first scheduled replacement point for that part. Any replacement part, provided it is equivalent in durability and performance, may be used in performance of maintenance or repairs. The owner is responsible for commissioning a qualified authorised technician/mechanic or authorised Honda Repair Centre to perform all required maintenance, as outlined in the Inspection, Cleaning, and Maintenance section in this manual and in the Honda User Manual.



NOTES





Hawk Group, PO Box 150, Southgate Sylvania, NSW 2224.

www.bullmax.com.au